



PHILIPPINE ACADEMY OF OPHTHALMOLOGY (PAO)

In cooperation with

Philippine Glaucoma Society (PGS)

invites you to the

2017 PAO Instructional Course

MASTERING COMMON EYE DISEASES: Diagnosis and Standards of Care

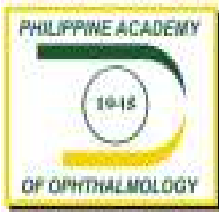
*“Angle Closure Disease –
Is it Primary or Secondary?”*

**September 20, 2017 (Wednesday)
7:00 pm – 9:00 pm**

**6/F Augusto Barcelon Auditorium,
The Medical City, Pasig City**

**2 PRC
CPD
UNITS**

For further inquiries:
Please call PAO Secretariat
(+632) 813-5324 / (+632) 813-5318
secretariat_pao@globelines.com.ph



MASTERING COMMON EYE DISEASES: Diagnosis and Standards of Care

"Angle Closure Disease – Is it Primary or Secondary?"

PROGRAMME

- 6:30 pm** **Registration / Dinner**
- 7:15 pm** **Opening Remarks**
Jessica Marie R. Abaño MD
Vice President, PAO
Overall CCEO Chair
- 7:30 pm** **What is Primary Angle Closure Disease?**
Diagnosis, Risk Factors, Classification
Denise Polly Chao-Po, MD
- 8:00 pm** **What are the Standards of treatment for Primary Angle Closure Disease?**
Maria Catherina Nasol, MD
- 8:30 pm** **What are the Secondary Angle Closure Diseases?**
Diagnosis, Risk Factors, Standards of Treatment
Jose Ma. Martinez, MD
- 8:50 pm** **Open Forum**
- 9:00 pm** **Closing Remarks**
Sherman O. Valero MD
PAO President

